

FLUID CONDENSATION SILICONES

M.A.Q.
30

New generation silicone condensation fluid for duplication of gypsum models and investment (replaces gelatine).

Features:

- Condensation silicone
- Extremely economical
- Elastic
- Good reproduction of details
- Good precision
- Not subject to inhibitions from external agents
- High casting fluidity
- Elastic recovery 98.5%
- Colour: Whitish
- Catalyst: Blue
- Shore hardness A 30

Working time at 23°C: 6-8'
Working time at 23°C: ≤ 60'

Packaging:

6 pkgs of 1 kg + 1 300 g liquid cat + becker + spatula

Code: SIL000150



DUPLICATION GELATINE

DUBLIGEL

Duplication gelatine for investment and gypsum models.

Features:

- Reversible
- Good dimensional stability
- Good precision and definition of details
- Compatible with gypsum, phosphate-bonded and alcoholic investments

Packaging: 10 kg bucket

Code: VAR000270



VELOCAT



Liquid catalyst for silicones.

Features:

- It can be used with all condensation silicones
- Fast catalysis
- Easy dosage
- Transparent

Packaging: 30 ml bottle

Code: CAT000051

SPINFLEX



Sprayed on the surface of the silicone material it reduces surface tension and increases fluidity of water-based materials (gypsum and investments).

Features:

- Does not affect dimensions
- Eliminates the risk of bubbles
- Indispensable for accurate detail reproduction

Packaging: 125 ml spray

Code: VAR000081

GELCAT



Gel catalyst for silicones.

Features:

- It can be used with all condensation silicones
- Easy dosage
- Chromatic contrast
- Red

Packaging: 40 g tube

Code: CAT000035

SPRAYSOL



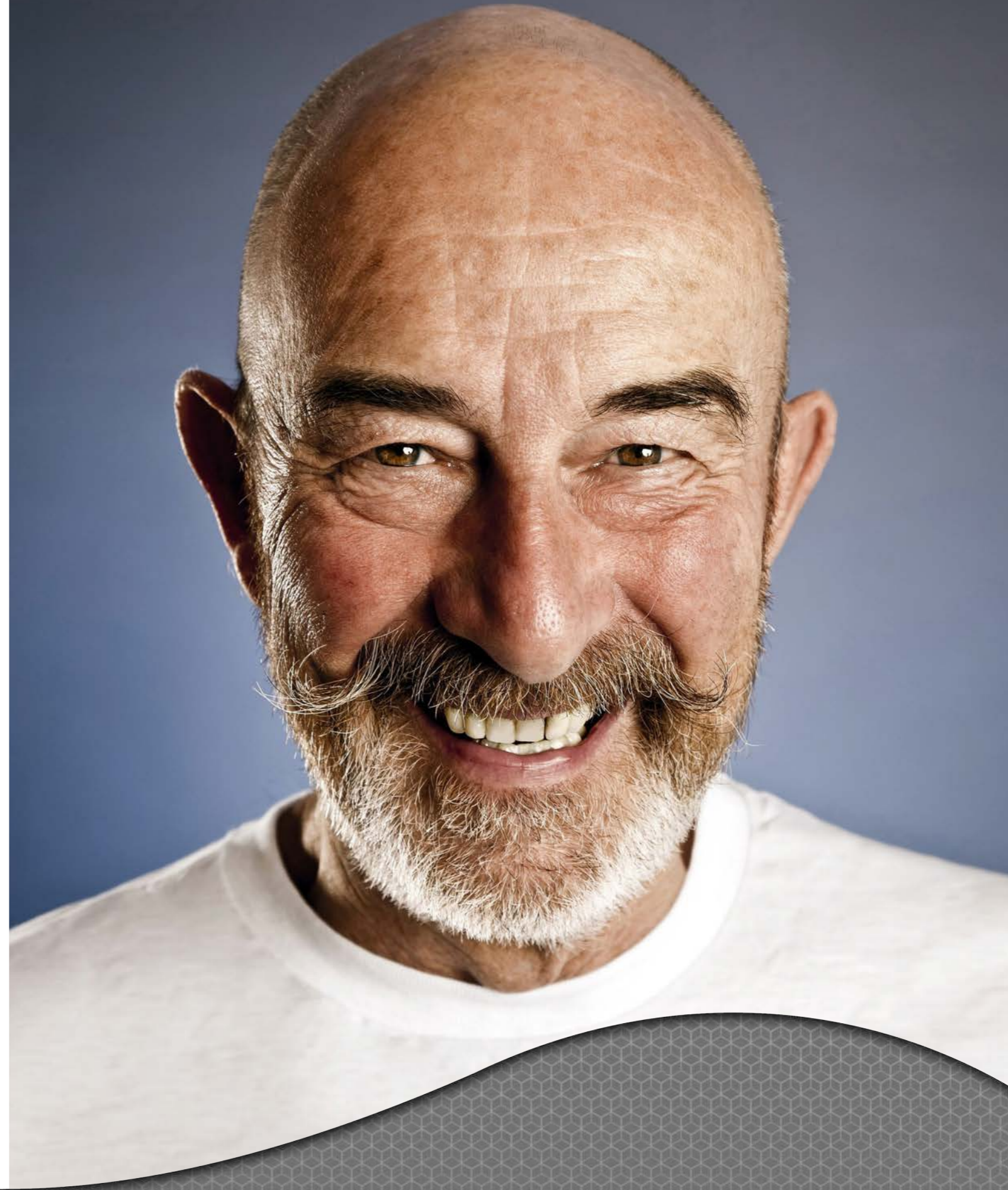
Excellent insulator between materials of the same type. Specifically for addition and condensation silicones.

Features:

- Prevents the adhesion of silicones during the construction of gingival masks
- Guarantees a good separation of the silicone impression from the gingival mask
- Only for extra-oral applications

Packaging: 85 ml spray

Code: SIL000018



ALLOY FOR CERAMIC



SHARK
NEW
CE 0426

NON-PRECIOUS metallic alloy for dental use, Nickel and Beryllium free, developed for high quality metal-ceramic restorations. Excellent bonding with the ceramics.

Indications:

- Telescopic crowns
- Single crowns
- Root posts
- Bridges of small and large size

Packaging: 102 g / 302 g / 1000 g can

Codes: LEG000040 102 g
LEG000041 302 g
LEG000042 1000 g

COMPOSITION %		TECHNICAL DATA	
Cobalt (Co)	58% - 62%	Limit of elasticity	450 (MPa)
Chromium (Cr)	30% - 32%	Elastic module	160 (GPa)
Molybdenum (Mo)	4.5% - 5.5%	Melting temperature	1480°C
Silicon (Si)	1% - 3%	Vickers hardness	280
Manganese (Mn)	< 1%	Melting range	1240-1350 °C
Iron (Fe)	< 1%	Density	8.8 g/cm ³
Carbon (C)	< 1%	Ultimate elongation	9 %
		CTE 25°C at 500°C	14.3 10 ⁻⁶ . K-1
		25°C at 600°C	14.8 10 ⁻⁶ . K-1



SHARK
4
CE 0426

Cobalt-Chrome based alloy for ceramics. Suitable for aesthetic investments. Beryllium and nickel free.

Packaging: 102 g / 302 g can

Codes: LEG000007 102 g
LEG000015 302 g

COMPOSITION %		TECHNICAL DATA	
Cobalt (Co)	61	Limit of elasticity	475 (MPa)
Chromium (Cr)	27	Elastic module	223 (GPa)
Molybdenum (Mo)	6	Melting temperature	1485°C
Tungsten	5	Vickers hardness	365
Silicon (Si)	< 1%	Melting range	1350-1385 °C
Manganese (Mn)	<1%	Density	8.6 g/cm ³
Iron (Fe)	<1%	Ultimate elongation	8 %
Carbon (C)	<1%	CTE 25°C at 500°C	14.1 10 ⁻⁶ . K-1
		25°C at 600°C	14.5 10 ⁻⁶ . K-1



SHARK
SKE
CE 0426

SHARK SKE is a Cobalt-Chrome based alloy, Beryllium free, expressly indicated for making high quality removable frame work prostheses.

Packaging: 1000 g can

Code: LEG000005

COMPOSITION %		TECHNICAL DATA	
Cobalt (Co)	64	Limit of elasticity	552 (MPa)
Chromium (Cr)	28	Elastic module	228 (GPa)
Molybdenum (Mo)	6	Melting temperature	1510°C
Silicon (Si)	< 1%	Vickers hardness	380
Manganese (Mn)	< 1%	Melting range	1300-1370 °C
Iron (Fe)	< 1%	Density	8.3 g/cm ³
Carbon (C)	< 1%	Ultimate elongation	10%



FLUX

HIGH FLUX 3379 and LOW FLUX 3359. Flux.

Packaging: 20 g can

Codes: FLUX ALLOY 3359
FLUX ALLOY 3379

SOLDERING



SHARK
CR-Co
CE 0426



Cr-Co based soldering rods. Melting range 1110-1200 °C

Packaging: 28 g can

Code: LEG000001

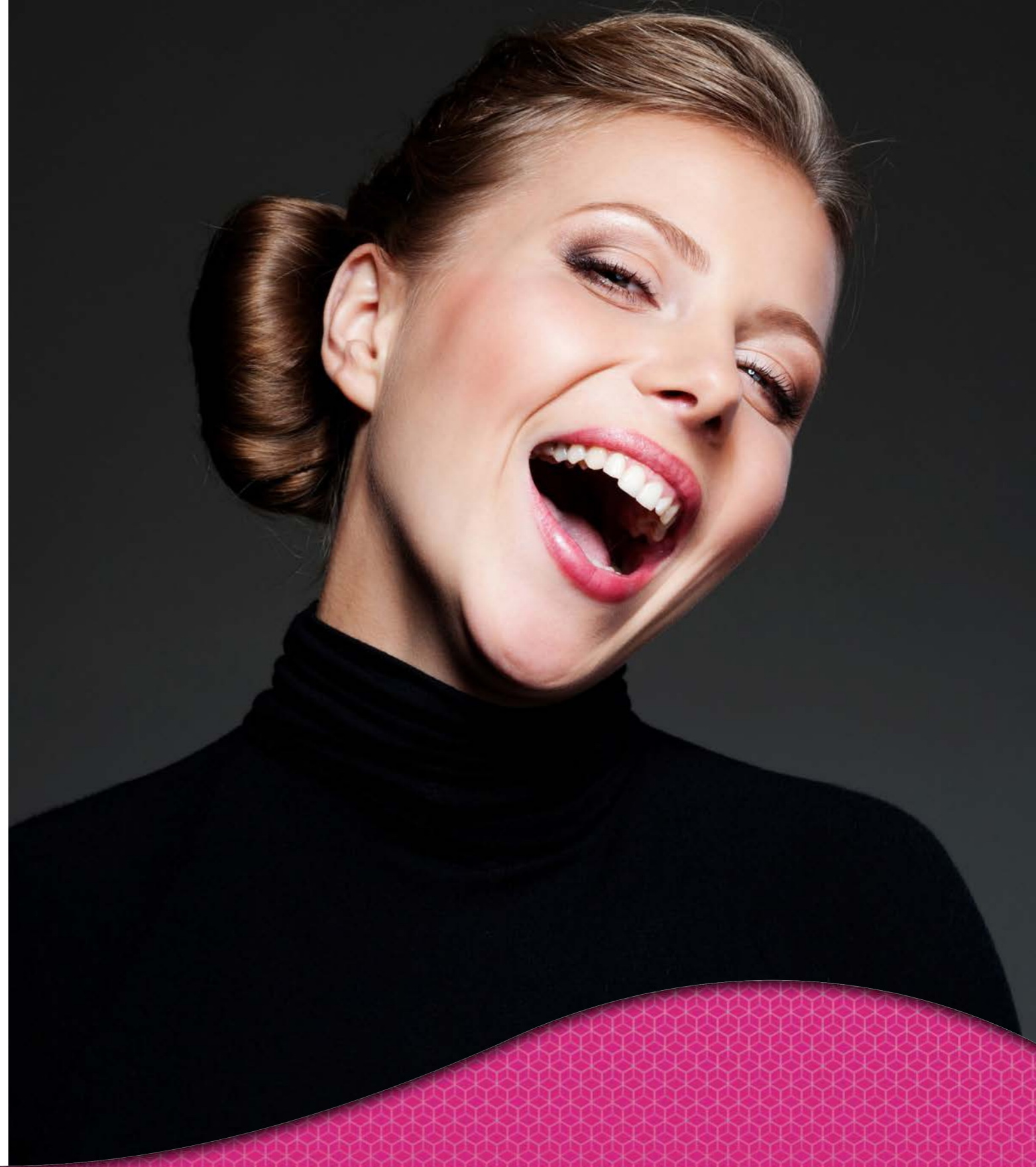


SHARK
CR-Co LASER
CE 0426

Cr-Co based laser wire for soldering. Ideal for alloys for ceramic and frame work prostheses. It does not create any problem with the ceramic.

Packaging: 4 g roll - roll length: around 180 cm

Code: LEG000021



COLD-CURED RESIN FOR REMOVABLE PROSTHESES (PREMIUM)



Cold-cured resin that can be polymerised in machine or in a pressure cooker. Indicated for making total and frame work prosthesis. Developed for the silicone mask technique and the pouring technique.
Classification according to Directive 93/42/EEC class IIa according to ISO 20795-1 Type 2: class 1.

Features:

- Excellent sliding properties.
- Extremely easy to work with
- Excellent fluidity with shape and colour stability over time
- Cadmium free

Chromaticity: pink veined - pink - opaque pink

Packaging: 1 kg powder / 500 ml liquid

Codes: RES060004	pink Veined
RES060005	pink
RES060012	opaque pink
RES060006	liquid

COLD-CURED RESIN FOR REMOVABLE PROSTHESES (BASIC)



Acrylic resin suitable for the repair of self-curing dentures. Excellent adhesion with resins based on methyl methacrylate, and reflected colour. Also suitable for extensions of the prosthesis, for combined and temporary prosthesis, and for relining. Complies with directives ISO 20795-1 Type 2: class 1, and it belongs to class IIa according to directive 93/42/EEC and subsequent updates.

Features:

- Easy to work with
- Excellent fluidity
- Excellent castability
- Long plastic phase
- Chromatic unalterability
- Air polymerisation without porosity

Chromaticity: pink

Packaging: 1 kg powder / 500 ml liquid

Codes: RES000062	powder
RES000063	liquid

COLD-CURED RESIN FOR REMOVABLE PROSTHESES (HIGH IMPACT)



Resin that has the same technical characteristics of a high impact resin that can be polymerised in machine or in pressure cooker. Suitable for total and frame work prostheses with low monomer content, as it contains micro-pearls that enable to make very aesthetically pleasing prostheses.
Classification according to Directive 93/42/EEC class IIa according to ISO 20795-1 Type 2: class 1.

Features:

- Excellent sliding properties.
- Ideal for the closed mould technique
- Cadmium free
- Easy to handle
- Long plastic and casting phase
- Perfectly stable.

Chromaticity: pink veined - pink

Packaging: 1 kg powder / 500 ml liquid

Codes: RES060051	pink Veined
RES060050	pink
RES060055	liquid

HEAT-CURED RESIN FOR REMOVABLE PROSTHESES (PREMIUM)



Resin made from high quality modern raw materials. Indicated for making total and partial prosthesis. It can undergo heat-cured polymerisation.
Classification according to Directive 93/42/EEC class IIa and according to ISO 20795-1 Type 1: class 1.

Features:

- Simple to work with
- Chromatic stability over time and high precision
- Low residual content of monomer and cadmium free
- Colour tone

Chromaticity: pink veined - pink

Packaging: 1 kg powder / 500 ml liquid

Codes: RES060001	pink veined DON	1 kg
RES060002	Pink DON	1 kg
RES060003	Liquid DON	500 ml

TEMPORARY APPL. RESIN



Self-curing resin that can be polymerised in machine or in a pressure cooker at low temperature for the construction of indirect temporary crowns and bridges.
Based on PMMA; cadmium free.
Classification according to Directive 93/42/EEC class IIa. ISO 10477, Type 1.

Features:

- Ideal for the construction of long-lasting temporary prostheses
- Excellent abrasion resistance
- Less absorption of oral fluids
- Easy to polish
- Withstands masticatory loads for a longer time
- Homogeneous surfaces

Chromaticity: A2 - A3 - A3,5 - A4 - B3 - C2 - C3 - D3

Packaging:

100 g powder / 80 ml liquid / 500 ml Maxi liquid

Codes: RES000007	PROJET A2	100 g
RES000008	PROJET A3	100 g
RES000025	MAXI POWDER PROJET A3	500 g
RES000009	PROJET A3.5	100 g
RES000026	MAXI POWDER PROJET A3.5	500 g
RES000018	PROJET A4	100 g
RES000010	PROJET B3	100 g
RES000011	PROJET C2	100 g
RES000019	PROJET C3	100 g
RES000017	PROJET D3	100 g
RES000032	MAXI POWDER PROJET A2	500 g
RES000013	LIQUID PROJET	80 ml
RES000014	LIQUID PROJET	500 ml



RESIN FOR BITE GUARDS AND SURGICAL GUIDES



Cold-cured resin that can be polymerised in machine or in a pressure cooker. Suitable for the construction of braces, orthodontic bite guards, and surgical guides.
Classification according to Directive 93/42/EEC class IIa and according to ISO 20795-2 Type 1.

Features:

- High transparency
- Excellent precision
- It can be handled with the salt and pepper technique
- Excellent for the paste technique
- Chromatic unalterability
- Direct application as jet or paste

Chromaticity: transparent

Packaging: 1 kg powder / 500 ml liquid

Codes: RES002501	TECHISIN	1 kg
RES002505	TECHISIN	500 ml



POLYURETHANE RESIN



Polyurethane pouring resin for the construction of high precision models and dies, resistant to cracks and for thinner structures.
Compatible with casting materials for both poly-addition and poly-condensation as well as for alginates.

Features:

- Excellent fluidity
- Low retraction
- Quick hardening
- Hardness 82 shore D
- Good heat resistance
- Easy milling with diamond mills

Working time at 23°C: 4 min
Working time at 23°C: 50 min.

Chromaticity: white - ivory - light blue - brown - grey

Packaging (kit): 500 g part A + 100 g Hardener
1 mixing becker / 1 spatula

Codes: RES050002	K.W. NEW white
RES050003	K.W. NEW brown
RES050004	K.W. NEW ivory
RES050005	K.W. NEW light blue
RES050009	K.W. NEW grey



ENAMELS FOR PROJET RESIN

ENAMEL	COLOUR	PACKAGING	CODES
S00	transparent	100 g	RES000023
S01	clear	100 g	RES000012
S01	clear	500 g	RES000027
S02	medium	100 g	RES000021
S02	medium	500 g	RES000028
S03	medium/dark	100 g	RES000024
S04	dark	100 g	RES000022

RESIN FOR OCCLUSAL SPLINTS AND IMPRESSION TRAYS

REVOR LIGHT

CE



UV sensitive resin splints. Indicated for the construction of occlusal splints, individual impression trays and bases of removable prostheses.

Features:

- Quick and simple to work with
- Excellent dimensional stability
- Rigid and resistant to tensile strength
- Uniform thickness

Chromaticity: transparent - blue - pink

Packaging: box with protection including 50 splints

Codes:	RES000503	transparent
	RES000504	pink
	RES000505	blue

REVOR

CE



Cold-cured methacrylic resin that can be polymerised in machine or in a pressure cooker. Indicated for the construction of occlusal splints, individual impression trays and bases of prostheses.

Features:

- Short mixing time
- It does not stick to instruments or fingers
- Excellent mechanical properties
- High precision and no removal from the model

Chromaticity: transparent - white - yellow powder
pink - transparent liquid

Packaging: 1 kg powder / 500 ml liquid

Codes:	RES001026	White powder
	RES001020	Yellow POWDER
	RES001001	Transparent POWDER
	RES001025	Transparent LIQUID
	RES001005	Pink LIQUID

CASTABLE RESIN

BLUE BLOCK



Castable resin that burns without leaving residues; UV sensitive. Developed for the construction of Toronto Bridge caps and bars.

Features:

- Above 150°C the product leaves no residue in the furnace
- Specific weight 1.1 g / m³
- Easy and precise modelling
- It can be removed without distortion

Chromaticity: transparent blue

Packaging:

box with three 3 g syringes + 9 nibs / 30 g box

Codes:	RES000016	3 g syringes
	RES000035	30 g box

R.H. INLAY



Cold-castable resin. Indicated for the melting and soldering technique. Developed for the construction of caps, individual attachments, abutments, fixing and resin dies. To be used with the brush modelling technique.

Features:

- Easy to mix and apply.
- Stable structure that leaves no residue in the furnace after elimination.
- High resistance and insignificant retraction

Chromaticity: transparent red

Packaging: 80 g powder / 50 ml liquid

Codes:	RES001541	R.H.INLAY, powder
	RES001542	R.H.INLAY, liquid

ACCESSORIES

SEALENT



Transparent photo-curing (UV-rays) lacquer, created to seal and polish the surfaces of acrylic resins.

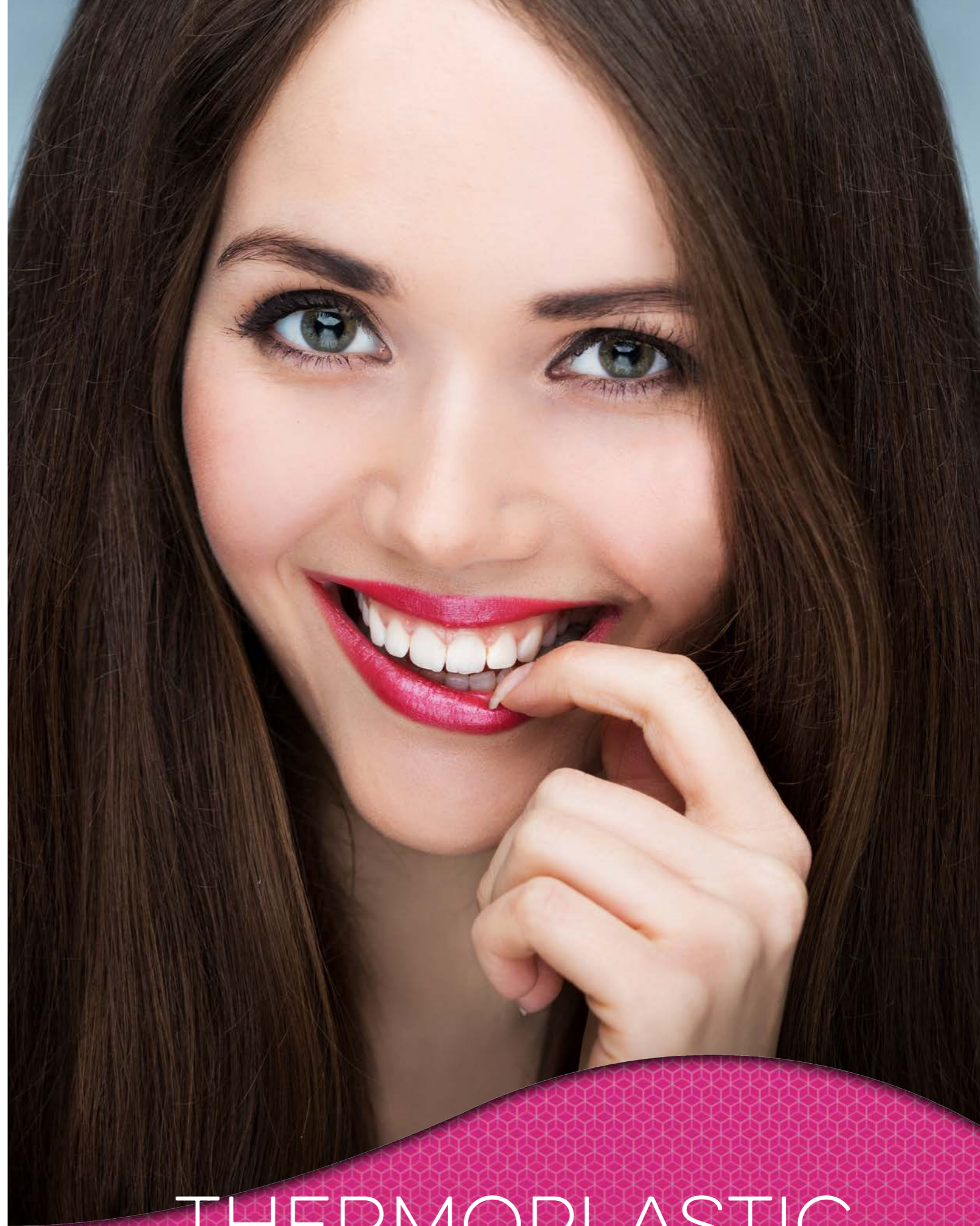
Features:

- It does not turn yellow over time
- Seals all micro porosities and smoothes surfaces
- Reduces the accumulation of dental plaque and facilitates its removal
- Stable and long-lasting bond

Chromaticity: colourless

Packaging: 30 ml bottle

Code: VAR000125



THERMOPLASTIC
MATERIALS

THERMOPLASTIC MATERIALS



Thermoplastic material 100% free from monomers
PROTHEUS is the ideal microcrystalline polyamide for the construction of flexible prostheses.

Advantages:

- It is hypoallergenic
- Elastic
- Withstands low temperatures
- High transparency
- Reduced absorption
- Economical

Chromaticity: transparent - pink - light pink

Packaging: 150 g / 600 g bottle

Codes:	RES000090	transparent	150 g
	RES000127	transparent	600 g
	RES000091	pink	150 g
	RES000128	pink	600 g
	RES000092	light pink	150 g
	RES000129	light pink	600 g

Thermoplastic material 100% free from monomers
PROTHEUS FLEX is the ideal microcrystalline polyamide for the construction of flexible prostheses. With respect to the traditional Protheus, elasticity is greater in this variant.

Advantages:

- It is hypoallergenic
- Elastic
- Withstands low temperatures
- High transparency
- Reduced absorption
- Economical

Chromaticity: transparent - pink

Packaging: 150 g / 600 g bottle

Codes:	RES000132	transparent	150 g
	RES040106	transparent	600 g
	RES040105	pink	150 g
	RES000131	pink	600 g



ASAKO is a thermoplastic polymer specifically developed for the construction of flexible removable partial dentures and hooks in the gingival tissue colour. Comfortable and light, it gives the patient a pleasant grip, guaranteeing total absence of discomfort. **ASAKO** is distinguished for its biocompatibility.

Advantages:

- High mechanical features
- No absorption (unlike nylon)
- Light and comfortable
- Stain-resistant
- Indestructible
- Translucent
- Economical
- Free from monomers (ideal for allergic patients)
- Long-lasting (partial dentures)
- Easy finishing

Chromaticity: light pink - transparent - translucent pink - pink

Packaging: 250 g / 500 g bottle

Codes:	RES000051	light pink	250 g
	RES000120	light pink	500 g
	RES000052	transparent	250 g
	RES000123	transparent	500 g
	RES000054	translucent pink	250 g
	RES000122	translucent pink	500 g
	RES000055	pink	250 g
	RES000130	pink	500 g



NXR was born out of the desire to offer a valid alternative not only for those who would rather not use a fixed denture, but also for all those who are allergic to acrylic dentures, by virtue of its excellent biocompatibility, while also constituting an excellent substitute for plates. **NXR** hardness is higher than Asako's, thus enabling the design of different dentures.

Advantages:

- 100% non-allergic
- Completely nylon free
- It does not absorb liquids or unpleasant smells
- Excellent substitute for metal prostheses

Chromaticity:
 "B" white - "C" light pink - "T" pink - "D" gums pink

Packaging: 250 g / 900 g bottle

Codes:	RES000070	colour "T" pink	250 g
	RES000124	colour "T" pink	900 g
	RES000071	colour "B" white	250 g
	RES000125	colour "B" white	900 g
	RES000072	colour "C" light pink	250 g
	RES000126	colour "C" light pink	900 g
	RES000073	colour "D" gums pink	250 g
	RES000133	colour "D" gums pink	900 g



It is an organic polymer that belongs to the family of Poly-Aryl-Ether-Ketones (PEEKs), high-temperature thermoplastic polymers; for more than 30 years, it has been considered to be one of the thermoplastic materials with the highest performance in the world.

TAKAY replaces metal as the structure for manufacturing fixed and removable dentures and denture structures in combination with a compound or acrylic resin. The works with this material are defined as "metal free".

TAKAY elasticity is comparable to the one of human bony tissue, thus constituting a material that can be perfectly integrated into the oral cavity. In fact, its mechanical properties are comparable to those of the skeleton, and as it is an insoluble material, it is particularly indicated for patients with allergies. Ideal for heat pressing works and milling processes with CAD/CAM systems. The device belongs to class IIa according to directive 93/42/EEC and subsequent updates.

Advantages:

- Biocompatible
- Stable and safe
- Metal free
- High thermal and chemical resistance
- Resistant dentures
- Natural sensation in the patient's mouth
- Light and comfortable
- Good sliding properties and wear resistance
- Good resistance to impact

Chromaticity: white

Packaging: 100 g bottle (granules)

Code: RES000030



Synthesis product obtained from a mixture of copolymers with high molecular weight, based on vinyl resin for injection. Suitable for the production of dental prostheses, orthodontic positioners, soft bite guards and tooth guards for sports activities.

Chromaticity:

red - green - blue - fuchsia - transparent - yellow

Packaging: 500 g can

Codes:	RES000080	transparent	500 g
	RES000081	red	500 g
	RES000082	green	500 g
	RES000083	blue	500 g
	RES000084	fuchsia	500 g
	RES000085	yellow	500 g



THERMOFORMING DISKS



Transparent thermoformable disks for vacuum thermoformers.

Features

- Transparent, rigid disk resistant to impact.
- Excellent deformability in moulding phase.
- It is bonded with acrylic resins.

Use

- Occlusal splints, stabilisation splints, miniplast splints, bruxism splints, dressing plates, excellent for casting models.

Packaging: box containing 20 and 30 pieces

Codes:	RES070001	30 pcs. 120 x 0.5 mm
	RES070002	30 pcs. 120 x 0.8 mm
	RES070003	20 pcs. 120 x 1 mm
	RES070004	20 pcs. 120 x 1.5 mm
	RES070005	20 pcs. 120 x 2 mm
	RES070006	20 pcs. 120 x 3 mm



ACCESSORIES

CARTRIDGES



T-TUBE CARTRIDGES

Non-collapsible cartridge. Diameter 22 mm x 125 mm

Packaging: 30 cartridges + teflon caps

Codes: RES000201
RES000202 30 pcs. (no caps)

COLLAPSIBLE CARTRIDGES

Collapsible cartridge for the SABILEX-FLEXITE system;
Diameter 25 x 115 mm

Packaging: 26 pcs.

Code: RES000045

COLLAPSIBLE CARTRIDGES

Collapsible cartridge for the Smile Jet and Full Jet system
Diameter 22 mm x 125 mm

Packaging: 30 cartridges + metal caps

Code: RES000200

Spray resistant to high temperatures.

Packaging: 500 ml spray

Code: SIL000500

UNIVERSAL SPRAY



MUFFLE



ALUMINIUM MUFFLE TYPE 100

Muffle for injection of thermoplastic materials that can be used with the following systems:

- Full - Jet
- Smile - Jet
- Pressing
- MG New Press

A muffle for small details is also available. It consists of a standard muffle divided into two sections.

Packaging: 1 piece in blister

Codes: ATT000211 type 100 muffle
ATT000215 2-hole muffle

ADAPTER

ADAPTOR FOR BREGA DISKS

Reduction unit for transparent thermoformable disks for thermoformers.
Diameter: from 135 mm to 120 mm (made of upper and lower part).

Packaging: 1 piece in blister

Code: ATT000037

ADAPTOR FOR SQUARE DISKS

Reduction unit from square to round for transparent thermoformable disks for thermoformers. Diameter: 120 mm (made of upper and lower part).

Packaging: 1 piece in blister

Code: ATT000038

LUX



Special formula for polishing thermoplastic resins.

Packaging: 30 ml bottle

Code: RES000031



CASTABLE PMMA DISKS FOR CAD CAM



Disk in Polymethylmethacrylate (PMMA), transparent or translucent red, for controlling the adaptability and the functionality for CAD-CAM, completely castable, it leaves no residue. Practical for placing a milled structure ready to be melt in metal. It can be used with all the milling machines for CAD-CAM. The device belongs to class IIa according to directive 93/42/EEC and subsequent updates.

Chromaticity: transparent and red
 Thickness: 20 mm
 Diameter: 95 mm Zirkonzahn / 98.5 mm
 Packaging: 1 disk

Codes: RES000109 transparent
 RES000110 red



DELTA SINGLE LAYER PMMA



Millable and castable polymethylmethacrylate resin. This product is a high quality homogeneous polymer, made up of polymethylmethacrylate with added reticulation agents to improve the structure. The device belongs to class IIa according to directive 93/42/EEC and subsequent updates.

Chromaticity: A2 - A3 - A3.5
 Thickness: 20 mm
 Diameter: 98.5 mm with collar.

Packaging: 1 Disk

Codes: RES060111 A2
 RES000112 A3
 RES000113 A3.5



DELTA DISKS IN MULTILAYER PMMA FOR PERMANENT TEETH (COMPATIBLE WITH AMMAN, WIELAND, ZIRKONZAHN OR SIMILAR)



The DELTA disk is a high quality innovative material made up of thermoplastic derivation resins, PMMA (polymethylmethacrylate) with added compound, for the production of long-lasting temporary crowns and bridges. The disk is homogeneous, giving a natural appearance to the final product. Its stratification is important: going from cervical to enamel with an excellent aesthetic result. Works can be performed while it is dry or wet. The device belongs to class IIa according to directive 93/42/EEC and subsequent updates.

Features:

- PMMA disk for milling
- Reduced content of residual monomer
- Guarantees greater resistance to dental plaque and to decolouration
- Resistant and long-lasting over time
- Natural colour
- Excellent abrasion resistance

Chromaticity: Vita shade guide
 Thickness: 13 mm - 16 mm - 20 mm
 Diameter: 95 mm Zirkonzahn / 98.5 mm

Packaging: 1 disk

Elasticity module: > 2.22 MPa
 Solubility in water: < 0.7µg/mm3
 Resistance to bending and elastic module: > 105 MPa
 Tensile strength: > 76 MPa
 Monomer residue (24h at 37°C and 30 min. in the open): < 0.6 %



SP/16 MULTI delta disks codes

RES060024 colour A2
 RES060025 colour A3
 RES060026 colour A3.5
 RES060027 colour A4
 RES060115 colour C2
 RES060031 colour C3
 RES060119 colour D2
 RES060032 colour D3

SP/20 MULTI delta disks codes

RES060028 colour A1
 RES060020 colour A2
 RES060021 colour A3
 RES060022 colour A3.5
 RES060023 colour A4
 RES060121 colour C2
 RES060029 colour C3
 RES060114 colour D2
 RES060030 colour D3

SP/13 AMANNGIRRBACH type delta disks codes:

RES060033 colour A3
 RES060034 colour A3.5

SP/20 AMANNGIRRBACH type delta disks codes:

RES060106 colour A1
 RES060107 colour A2
 RES060104 colour A3
 RES060105 colour A3.5
 RES060108 colour A4
 RES060116 colour C2
 RES060109 colour C3
 RES060110 colour D3

SP/16 ZIRKONZAHN type delta disks codes:

RES060035 colour A2
 RES060037 colour A3
 RES060039 colour A3.5
 RES060118 colour C2
 RES060124 colour D2
 RES060123 colour D3

SP/20 ZIRKONZAHN type delta disks codes:

RES060036 colour A2
 RES060038 colour A3
 RES060040 colour A3.5
 RES060117 colour C2
 RES060120 colour D2
 RES060122 colour D3

TITAN DISKS



DEGREE 5 TITANIUM DISKS.

This material combines absolute biocompatibility with extreme versatility of use; in fact, it is the only metal with which bridges, crowns, superstructures, plates and dental implants can be made.

Features:

- Extremely reduced thermal conductivity
- High degree of purity
- Resistance similar to steel but 45% lighter
- Versatility of use
- Radio-opacity with translucent effect

Thickness: 10 mm - 12 mm - 14 mm - 18 mm - 20 mm
Diameter: 98.4 mm

Packaging: 1 disk

Codes: TIT000001	DIAM 98 SP10 without collar
TIT000002	DIAM 98 SP12 with collar
TIT000003	DIAM 98 SP14 with collar
TIT000004	DIAM 98 SP18 with collar
TIT000005	DIAM 98 SP20 with collar



MULTILAYER PMMA BLOCK FOR CAD-CAM



Block in PMMA for milling, created for the production of temporary bridges and crowns. The device belongs to class IIa according to directive 93/42/EEC and subsequent updates.

Compatibility: SIRONA system
Dimensions: 39 mm x 19 x 15.45 mm

- Elasticity module: **> 2.220 MPa**
Solubility in water: **< 0.7µg/mm3**
Resistance to bending and elastic module: **> 105 MPa**
Tensile strength: **> 76 MPa**
Monomer residue (24h at 37°C and 30 min. in the open): **< 0.6 %**

Packaging: 6 pcs.

Codes: RES060100	colour A2
RES060101	colour A3
RES060102	colour A3.5
RES060103	colour A4



DPK DISK (PEEK POLYETHERETHERKETONE)



New medical polymer belonging to class IIa with high performance and high technology for prostheses. Thermoplastic material particularly indicated for large size implant support prostheses. Elastic module comparable to the elasticity of human bone.

Features:

- Metal free without any exchange of ions in the oral cavity
- High comfort for the patient thanks to its lightness
- Tasteless
- Insignificant thermal or electrical conductivity
- Sterilizable

Ideal for:

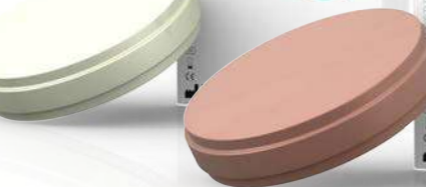
- Bars
- Abutment
- Bridges and crowns
- Toronto

Resistance to bending and elastic module: **> 180 MPa**
Melting range: **approx. 350°C**
Water absorption: **0.3%**

Colour: white - pink - A2
Height: 16 mm - 20 mm - 24 mm
Diameter: 98 mm

Packaging: 1 disk

Codes: RES070100	SP/16 white
RES070101	SP/20 white
RES070102	SP/24 white
RES070103	SP/20 A2
RES070104	SP/20 pink



ACRYLIC RESIN DISKS (FOR TOTAL PROSTHESES)



Disk for CAD-CAM designed for the construction of total and partial prostheses.

Chromaticity: pink veined - clear veined
Thickness: 20 mm - 25 mm
Diameter: 98.5 mm

Packaging: 1 disk

Codes: RES060041	SP/20	clear veined
RES060042	SP/20	pink veined
RES060043	SP/25	clear veined
RES060044	SP/25	pink veined



WAX DISKS FOR CAD CAM

(COMPATIBLE WITH AMMAN, WIELAND, ZIRKONZAHN)

DISK
IN WAX

Wax disks for the CAD-CAM technique. Ideal for milling, scanning and traditional modelling. Ideal for melting processes.

Advantages:

- 100% castable wax

Packaging: 1 disk



WAX DISK WITHOUT COLLAR

Chromaticity: ivory - grey
Height: 16 mm
Diameter: 98 mm

Codes: CERC16AV ivory
CERC16G grey

WAX DISK HIGH COLLAR

Chromaticity: ivory - grey
Height: 16 mm - 20 mm
Diameter: 98.5 mm

Codes: CERW16AV ivory
CERW16G grey
CERW20AV ivory
CERW20G grey

WAX DISK NARROW COLLAR

Chromaticity: ivory - grey
Height: 16 mm
Diameter: 111.5 mm

Codes: CERD16AV ivory
CERD16G grey

AMMAN WAX DISK

Chromaticity: ivory - grey
Height: 20 mm
Diameter: 101 mm

Codes: CERA20AV ivory
CERA20G grey



ZIRK TYPE WAX DISKS

Chromaticity: ivory - grey
Height: 16 mm
Diameter: 95 mm

Codes: CERZ16AV ivory
CERZ16G grey



CR-CO DISKS

DISK
IN CHROME-COBALT
CE 0426

Chrome-cobalt disks are characterised by high microstructural homogeneity, which enables to obtain excellent results. The device belongs to class IIa according to directive 93/42/EEC and subsequent updates.

Features:

- Nickel and beryllium free
- Easy milling
- Free from distortions
- Highly corrosion resistant

Thickness: 10 mm - 12 mm - 13.5 mm - 14 mm - 15 mm - 24.5 mm
Diameter: 98.3 mm

Packaging: 1 disk

Codes: LEG000050 10 mm
LEG000051 12 mm
LEG000052 13.5 mm
LEG000053 14 mm
LEG000054 15 mm
LEG000055 24.5 mm



IMPORTANT WARNINGS

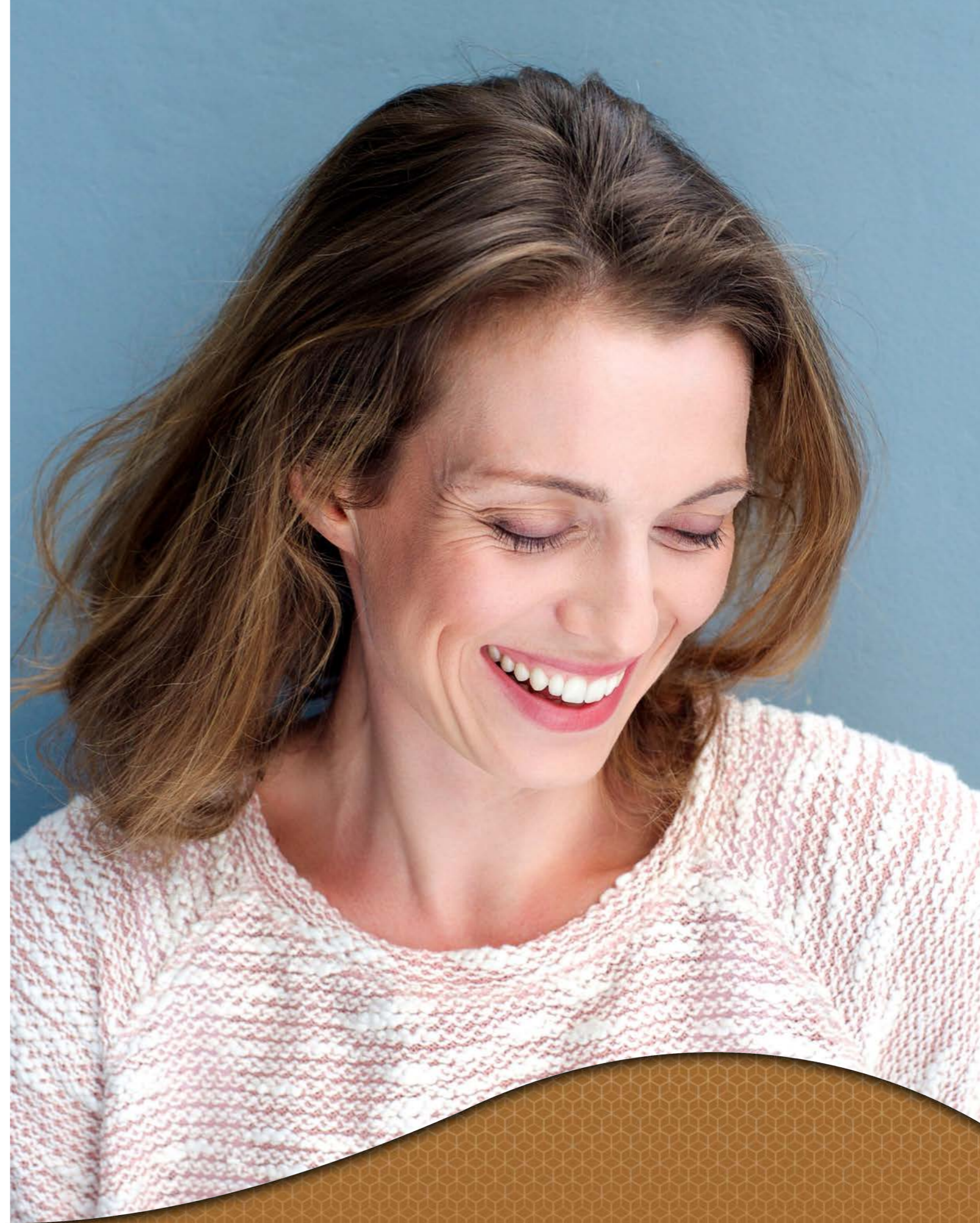
Like for all types of resins, excessive heating should be avoided while working with mills and during polishing.

Wear respiratory protective masks.

Sterilization must be performed with electromagnetic waves.

They are used as an alternative for solid materials that cannot be exposed to high temperatures (UV rays).

Do not use autoclave.





SANDS - PURE ALUMINIUM OXIDE

High quality aluminium oxide with sharp edges. 99.9% purity.
Depending on the grain size chosen, the effect can range from light to very abrasive.
The product does not generate any dust.

BIOXID



BIOXID (50 -75 micron)
Medium-low grain aluminium oxide created for the elimination of oxides from the metallic structure and for mechanical retention-abrasion.

- Advantages:**
- On ceramic surfaces, with low pressure, it has a retention effect, which is useful for the enamel firing

Packaging: 7 kg / 25 kg can

Codes:	SAB000020	50 my	7 kg
	SAB000119	50 my	25 kg
	SAB000018	75 my	7 kg
	SAB000108	75 my	25 kg

BIOXID



BIOXID (90 - 105 - 125 micron)
Medium-high grain aluminium oxide created for the elimination of oxides from the structure of hard (palladiated) metals and for mechanical retention.

- Advantages:**
- Indicated for cases in which strong metallic retention is required

Packaging: 7 kg / 25 kg can

Codes:	SAB000017	90 my	7 kg
	SAB000110	90 my	25 kg
	SAB000016	105 my	7 kg
	SAB000115	105 my	25 kg
	SAB000015	125 my	7 kg
	SAB000112	125 my	25 kg

BIOXID



BIOXID (150 - 250 micron)
Coarse grain aluminium oxide created for the elimination of investments and the oxide of metals.

- Advantages:**
- Indicated for cases in which strong metallic retention is required

Packaging: 7 kg / 25 kg can

Codes:	SAB000014	150 my	7 kg
	SAB000010	150 my	25 kg
	SAB000011	250 my	7 kg
	SAB000111	250 my	25 kg

SANDS - CORUNDUM

CORINSAT



WHITE CORINSAT (250 micron)
Coarse grain white corundum.
Particularly abrasive for the sandblast of plates.

Advantages:

- Strong and long-lasting over time

Packaging: 10 kg can

Code: SAB000080

CORINSAT



RED CORINSAT (250 micron)
Coarse grain red corundum. Indicated for the recycling sandblasters of frame work laboratories.

Advantages:

- Strong and long-lasting over time

Packaging: 10 kg can

Code: SAB000070

SANDS - QUARTZ-BASED

ABRAL



Extremely pure non-abrasive quartz-based sand.
Suitable for the elimination of residues of phosphate-bonded investments from metallic structures with recycling sandblasters.

Advantages:

- Eliminates investment residues without abrading the metal

Packaging: 6 kg can

Code: SAB000060

SANDS GLASS MICROSPHERES FOR POLISHING

Non-abrasive glass microspheres created for polishing metals.

PERIPLAST



PERIPLAST (55 micron)

Glass microspheres with highly polishing effect.
Indicated for the elimination of investment residues from pressed ceramics and from metallic structures.

Advantages:

- Polishing effect on occlusal tables
- Elimination of gypsum residues from the interstices of removable prostheses

Packaging: 6 kg can

Code: SAB000050

PERIPLAST

PERIPLAST (90 micron)

Glass microspheres indicated for the elimination of residues of phosphate-bonded investments from metallic structures and for polishing occlusal tables.

Advantages:

- Polishing effect on occlusal tables

Packaging: 6 kg can

Code: SAB000040

